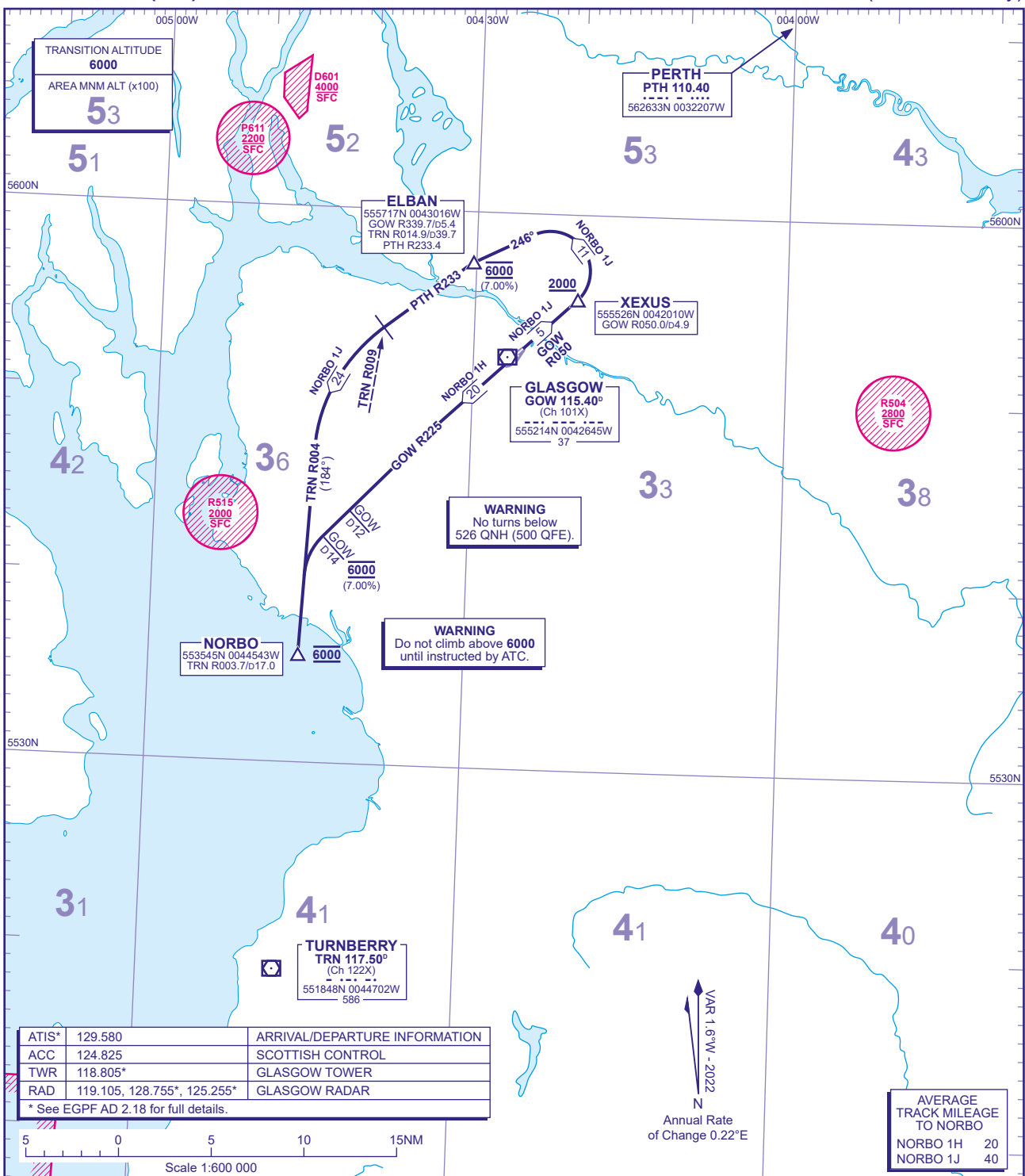


STANDARD INSTRUMENT CHART -
INSTRUMENT (SID) - ICAO

DISTANCES IN NAUTICAL MILES
BEARINGS, TRACKS AND RADIALS ARE MAGNETIC
ALTITUDES AND ELEVATIONS ARE IN FEET

GLASGOW
NORBO (Jet aircraft only)



NORBO 1H RWY 23	Climb straight ahead to intercept GOW VOR R225 . Cross GOW D12 5000 or above. Cross GOW D14 at 6000 then turn left onto TRN VOR R004 to NORBO .	T256, L186, Y96.
OBSTACLE CLEARANCE - RWY 23: Maintain minimum 3.8% climb to 1200.		
NORBO 1J RWY 05	Climb straight ahead to intercept GOW VOR R050 . Cross GOW D4.9 (XEXUS) 2000 or above then turn left onto track 246° to ELBAN (TRN VOR R014.9) , crossing ELBAN at 6000 (7%) , to intercept PTH VOR R233 . At TRN VOR R009 turn left onto TRN VOR R004 to NORBO .	T256, L186, Y96.
OBSTACLE CLEARANCE - RWY 05: Maintain minimum 4.5% climb to 1500.		
GENERAL INFORMATION 1 SIDs reflect Noise Abatement Procedures. See EGPF AD 2.21 for Noise Abatement Procedures. 2 Climb gradients greater than 3.3% are required for obstacle clearance purposes, as indicated. In addition climb gradients greater than those necessary for obstacle clearance are required for ATC and airspace requirements as indicated. 3 En-route cruising levels will be issued after take-off by 'Scottish Control'. Report callsign, SID designator, current altitude and cleared altitude on first contact with 'Scottish Control'. 4 Maximum 250KIAS below FL100 unless otherwise authorised. 5 Expect first CPDLC Data Link Authority to be EGPF.		
CHANGE (6/25): ATIS, RAD FREQUENCIES REVISED.		